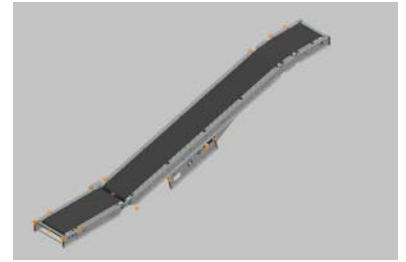


# SBI

## Incline Slider Bed Belt Conveyor

The model SBI is a floor-to-floor incline conveyor. It is equipped with an adjustable double nose-over at the discharge end to ensure a smooth transfer from the incline to horizontal plane. Inclines are easily adjusted up to 30 degrees. This conveyor can also be used as a booster conveyor in gravity flow systems.

- Center Drive
- Reversible
- Brake Motor
- System Ends
- Double Nose-Over
- Pop-Out Roller
- Powered Feeder
- Ceiling Hangers Available
- Adjustable MS-Type Floor Supports Available
- Undertrussing Available (18", 24", and 30" OAW)



Conveyor shown in Standard Gray.

**OTHER STANDARD COLORS**

**TECHNICAL MANUAL**

| Size to Order  | "H" @ 25°          |                |           |                  | Belt Width         |                     | Size to Order Overall Length "A" | 24"  | 30"  | 36"  |
|----------------|--------------------|----------------|-----------|------------------|--------------------|---------------------|----------------------------------|------|------|------|
|                | Overall Length "A" | Bed Length "L" | "B" @ 25° | Infeed @ 30 1/2" | Between Rail Width | Overall Frame Width |                                  |      |      |      |
| 4" Dia. Pulley |                    |                |           |                  | 12"                | 18"                 |                                  |      |      |      |
|                |                    |                |           |                  | 15"                | 21"                 |                                  | 27"  | 33"  | 39"  |
|                |                    |                |           |                  | 18"                | 24"                 | 6" Dia. Pulley                   | 30"  | 36"  | 42"  |
| 13' 10"        | 10'                | 12' 8"         | 4' 11"    | Weights (lbs.)   | 941                | 1106                | 14'                              | 1305 | 1533 | 1761 |
| 15' 10"        | 12'                | 14' 7"         | 5' 8"     |                  | 971                | 1142                | 16'                              | 1347 | 1581 | 1815 |
| 17' 10"        | 14'                | 16' 5"         | 6' 4"     |                  | 1001               | 1178                | 18'                              | 1389 | 1629 | 1869 |
| 19' 10"        | 16'                | 18' 3"         | 7' 2"     |                  | 1031               | 1214                | 20'                              | 1431 | 1677 | 1923 |
| 21' 10"        | 18'                | 20' 1"         | 8' 0"     |                  | 1061               | 1250                | 22'                              | 1473 | 1725 | 1977 |
| 23' 10"        | 20'                | 21' 11"        | 8' 10"    |                  | 1091               | 1286                | 24'                              | 1515 | 1773 | 2031 |
| 25' 10"        | 22'                | 24' 8"         | 10' 0"    |                  | 1121               | 1322                | 22'                              | 1557 | 1821 | 2085 |
| 27' 10"        | 24'                | 25' 6"         | 10' 6"    |                  | 1151               | 1358                | 28'                              | 1599 | 1869 | 2139 |
| 29' 10"        | 26'                | 27' 4"         | 11' 5"    |                  | 1181               | 1394                | 30'                              | 1641 | 1917 | 2193 |
| 31' 10"        | 28'                | 29' 2"         | 12' 5"    |                  | 1211               | 1430                | 32'                              | 1683 | 1965 | 2247 |
| 33' 10"        | 30'                | 31' 0"         | 13' 1"    |                  | 1241               | 1466                | 34'                              | 1725 | 2013 | 2301 |
| 35' 10"        | 32'                | 33' 10"        | 14' 0"    |                  | 1271               | 1502                | 32'                              | 1767 | 2061 | 2355 |
| 37' 10"        | 34'                | 34' 8"         | 14' 7"    |                  | 1301               | 1538                | 38'                              | 1809 | 2109 | 2409 |
| 39' 10"        | 36'                | 36' 5"         | 15' 7"    |                  | 1331               | 1574                | 40'                              | 1851 | 2157 | 2463 |
| 41' 10"        | 38'                | 38' 2"         | 16' 6"    | 1361             | 1610               | 42'                 | 1893                             | 2205 | 2517 |      |
| 43' 10"        | 40'                | 40' 0"         | 17' 4"    | 1391             | 1646               | 44'                 | 1935                             | 2253 | 2571 |      |

Note: All weights in catalog are conveyor weights only. Accessories, crating, etc., are not included.



# Standard Specifications

SBI

**BELT** – High-Grip Longitudinal Grooved. Clipper lacing.

**BED** – 12 ga. galvanized slider pan mounted in 6 1/2 in. x 12 ga. powder-painted, formed steel channel frame. Standard 4 ft., 6 ft., 8 ft., and 10 ft. long sections bolt together with splice plates.

**DOUBLE NOSE-OVER** – A 26 in. long horizontal and a 12 in. long nose-over section provides a two-step transition of product from incline to horizontal. Provides up to 30-degree incline adjustment.

**LOW POWERED FEEDER** – Chain type driven from tail pulley of inclined conveyor. Supports not included in base price.

**CENTER DRIVE** – Located on the incline section. Chain guard located on left hand side.

**DRIVE PULLEY** – 8 in. dia. with 1 7/16 in. dia. shaft at bearings; machine crowned and fully lagged.

**TAIL PULLEY** – 4 in. dia. with 1 in. dia. shaft at bearings or 6 in. dia. with 1 3/16 in. dia. shaft at bearings; machine crowned.

**TAKE-UP PULLEY** – 6 in. dia. with 1 3/16 in. dia. shaft at bearings; machine crowned.

**TAKE-UP** – Take-ups in center drive provides 16 in. of belt take-up.

**SNUB IDLER/NOSE-OVER ROLLERS** – Adjustable 2 1/8 in. dia. or 2 1/2 in. dia. pre-lubricated ball bearings. Snub guards included.

**RETURN IDLER** – Adjustable 1.9 in. dia., pre-lubricated ball bearings.

**BEARINGS** – Sealed, pre-lubricated, self-aligning ball bearings on drive, tail and take-up pulley.

**SPEED REDUCTION** – Sealed worm gear C-face speed reducer. No. 50 roller chain to drive pulley.

**MOTOR** – 1 HP, 208/230/460/575V, 3 Ph. 60 Hz. Totally Enclosed C-face SSB Brake Motor (6 ft./lb.).

**BELT SPEED** – Constant 65 FPM.

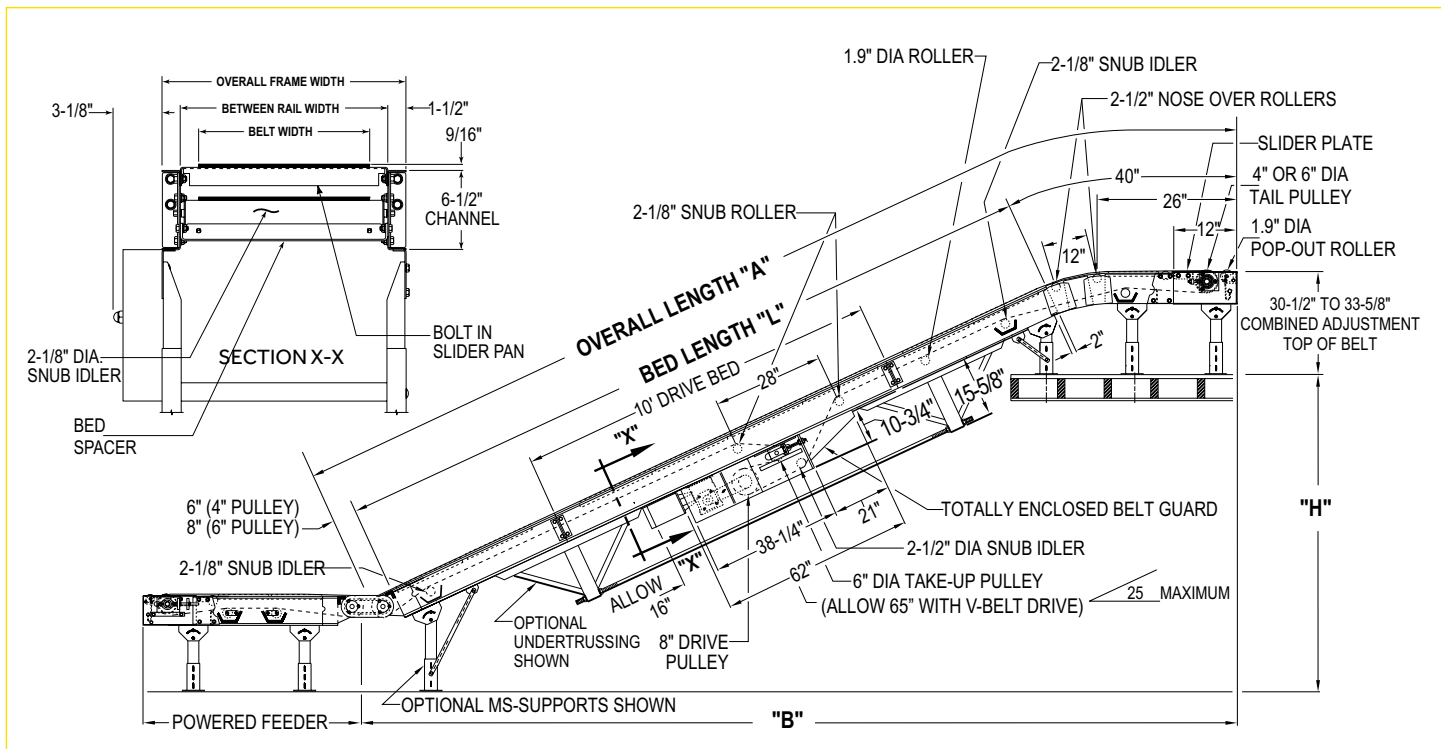
**CAPACITY** – Maximum load per linear foot of conveyor 100 lbs. NOT TO EXCEED capacity in charts.

**FLOOR SUPPORTS** – Supplied as optional equipment.

| BR  | Belt Width | OAW | Feeder Length |
|-----|------------|-----|---------------|
| 15" | 12"        | 18" | 35 1/2"       |
| 21" | 18"        | 24" | 50 1/2"       |
| 27" | 24"        | 30" | 67 1/2"       |
| 33" | 30"        | 36" | 79 1/2"       |
| 39" | 36"        | 42" | 91 1/2"       |

| HP | Belt Widths To | Distributed Load (lbs.) |     |
|----|----------------|-------------------------|-----|
|    |                | 14'                     | 44' |
| 1  | 22"            | 390                     | 375 |
|    | 30"            | 380                     | 355 |
|    | 36"            | 375                     | 340 |
| 2  | 22"            | 810                     | 790 |
|    | 36"            | 790                     | 755 |

# SBI



## Optional Equipment

**FLOOR SUPPORTS** – MS Type floor supports are available with a wide range of adjustment. Specify top of belt or roller elevation. One support required at every bed joint and ends of conveyor. Holes in feet for lagging to floor. Knee braces recommended above MS-3 support.

**BELT** – Black Trackmate 120 Roughtop with PVC Cover, Brown Polymate Roughtop w/Nitrile cover, Pure Gum Rubber Roughtop.

**BELT SPEED** – Other constant and variable speeds v-belt drive supplied on speeds under 20 FPM (1 HP), 46 FPM (2 HP). Note: Capacity affected with speed change.

**V-BELT DRIVE** – V-belt supplied between motor and reducer. Allow 65 in.

**O-RING DRIVE CHAIN** – With sealed-in lubricant (recommended for applications that do not permit regular lubrication).

**GUARD RAILS** – Adjustable Universal Channel Guard Rail, overlapping fixed channel (one direction), non-overlapping fixed channel (bi-directional).

**PULLEYS** – 6 in. dia. tail pulley with 1 3/16 in. dia. shaft at bearings in place of 4 in. when not furnished as standard.

**CEILING HANGER** – 5/8 in. dia. x 8 ft. long unplated rods fully threaded. Other lengths and galvanized rods available.

**UNDERTRUSSING** – Available in place of ceiling hangers. Maximum bed length 40 ft. Maximum overall width 30 in.

**MOTOR** – Energy efficient, single phase, other characteristics. 2 HP maximum.

**ELECTRICAL CONTROLS** – Non-reversing and reversible magnetic starters and push button stations. AC variable frequency drive.